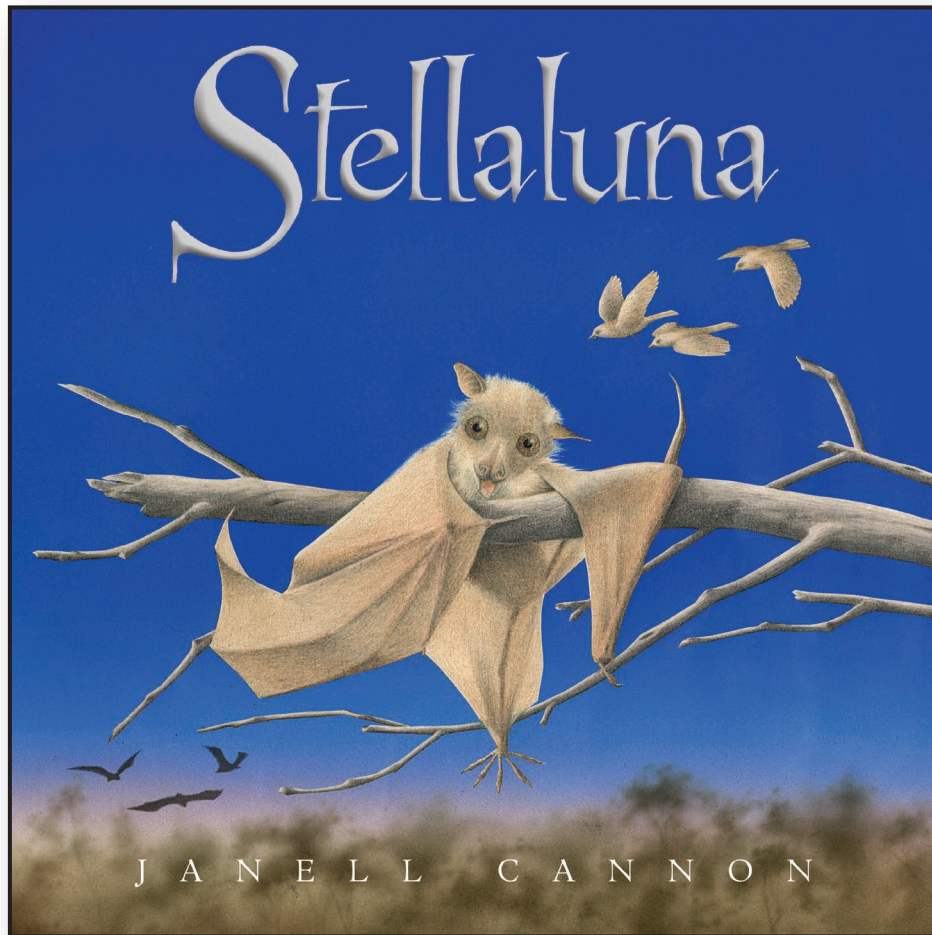


CRAFTS & ACTIVITIES



ISBN 978-0-544-87435-0

SEPARATED FROM HER MOTHER before she is old enough to fly, the little fruit bat Stellaluna finds herself all alone—until she meets some unexpected friends who show her a surprising new way of seeing the world.

Stellaluna's story has been beloved for more than a generation. Janell Cannon's classic tale reminds us that our bonds of friendship are stronger than our differences.

A New York Times Bestseller

A Parents Magazine 50 Best Children's Books selection

A New York Times Book Review's 50 Years of Children's Books selection

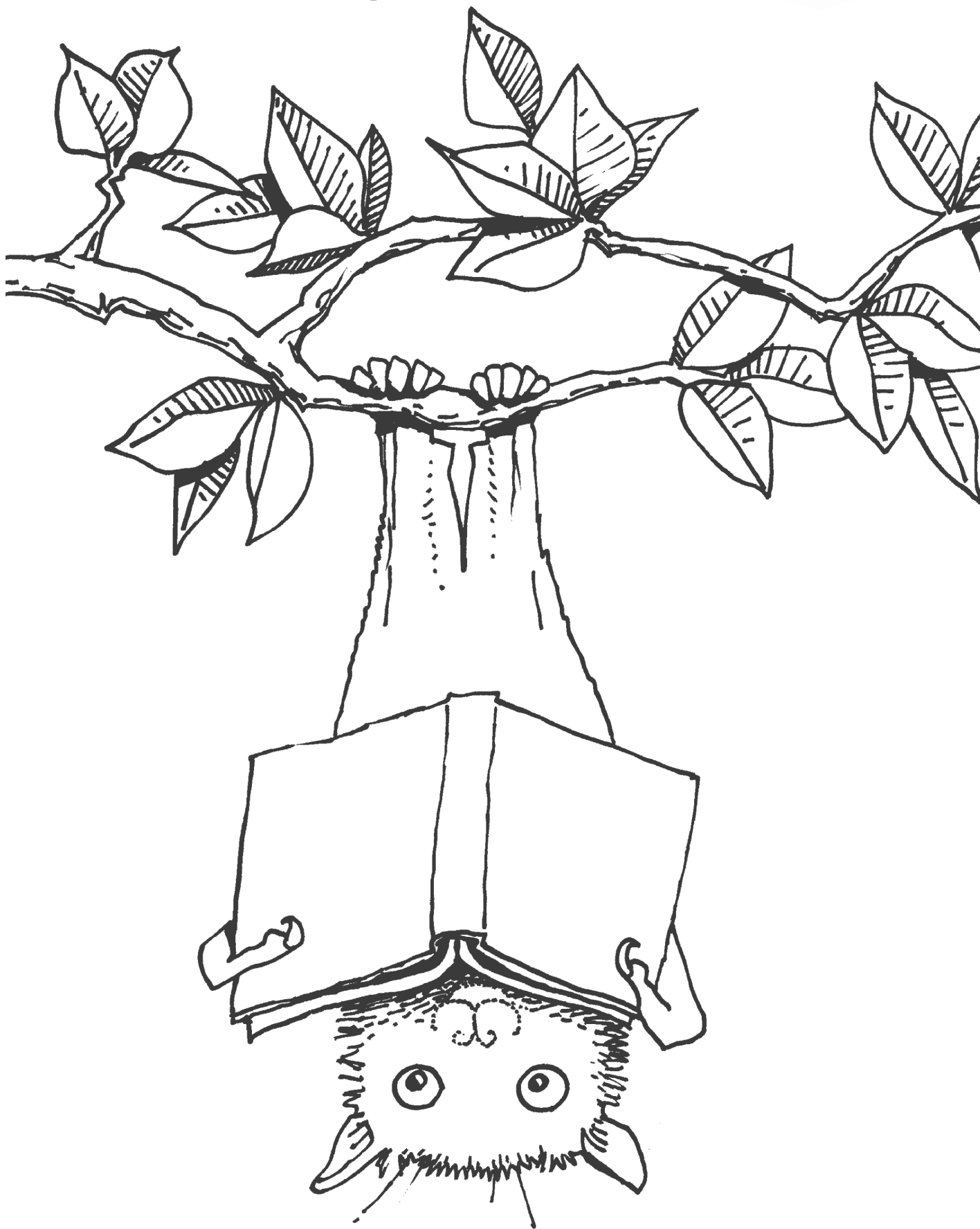
**Use the crafts and activities in this kit
to explore Stellaluna's world.**



Houghton Mifflin Harcourt

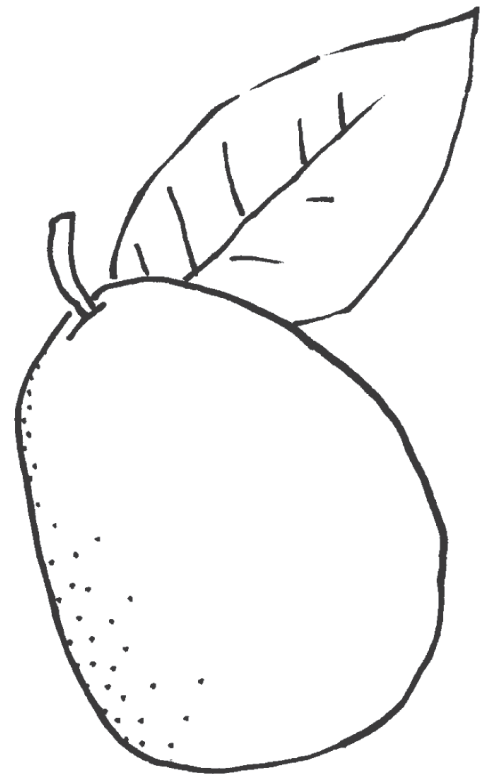
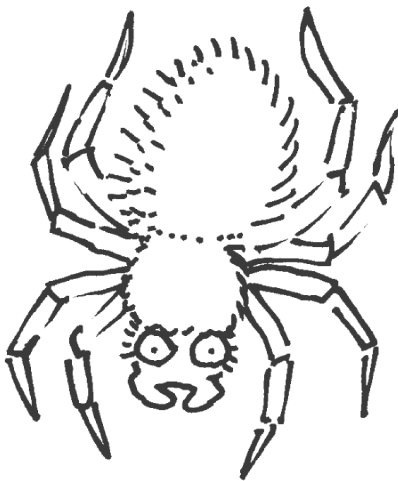
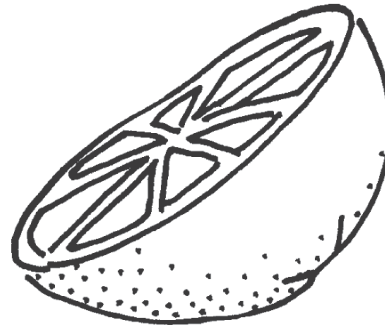
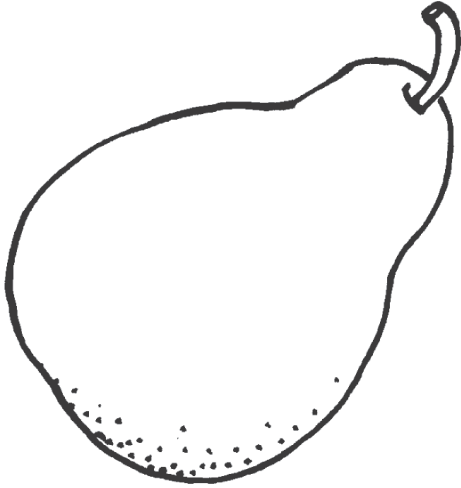
Illustrations copyright © 1993, 2018 by Janell Cannon. All rights reserved. This page may be photocopied for free distribution.

Coloring Sheet



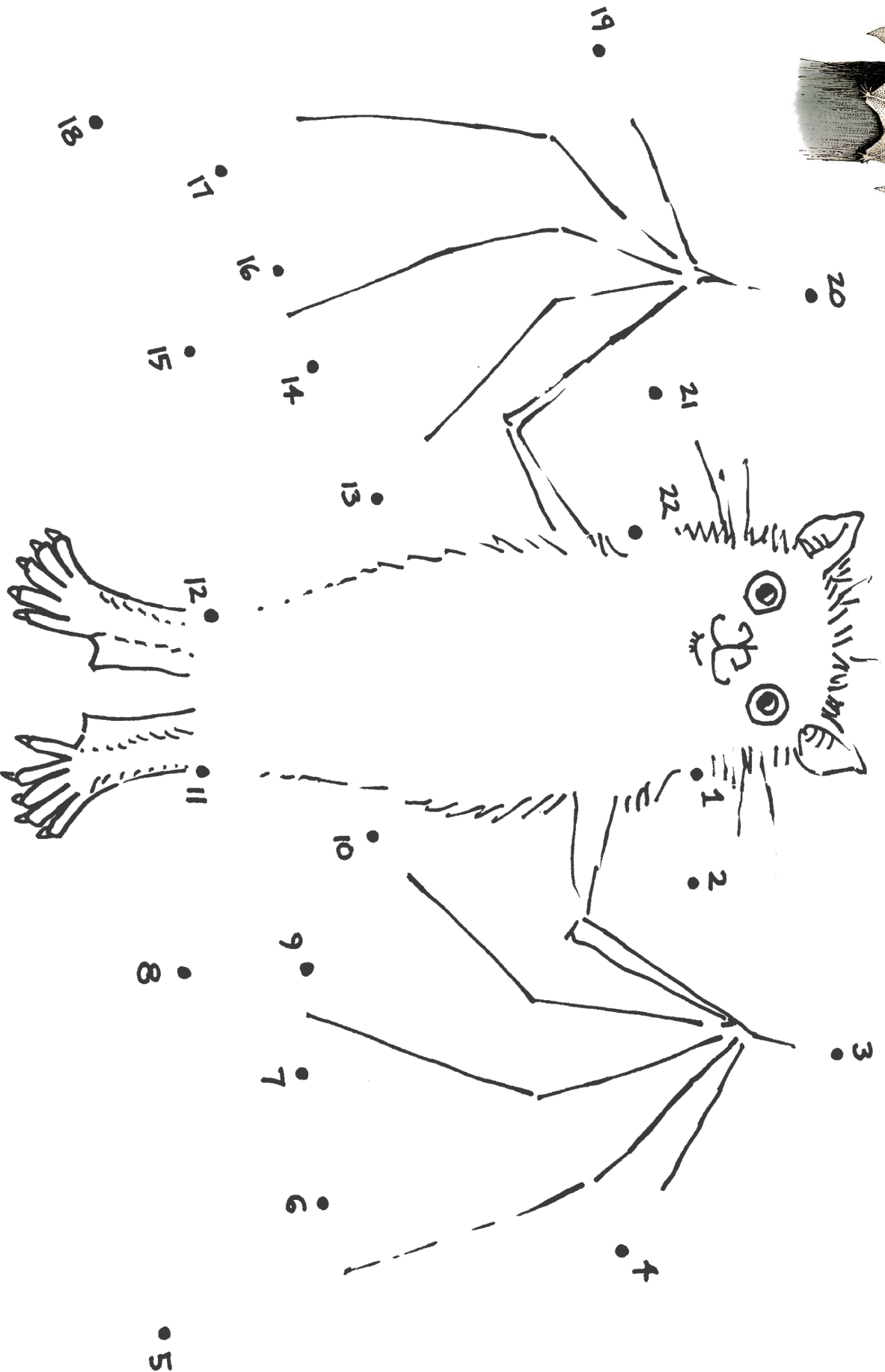
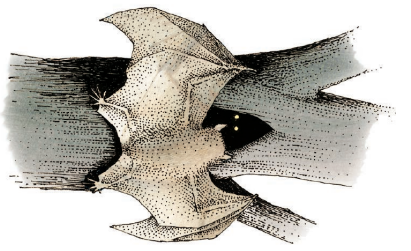
Favorite Foods

Color the items below and circle the one Stلالuna does not like to eat.



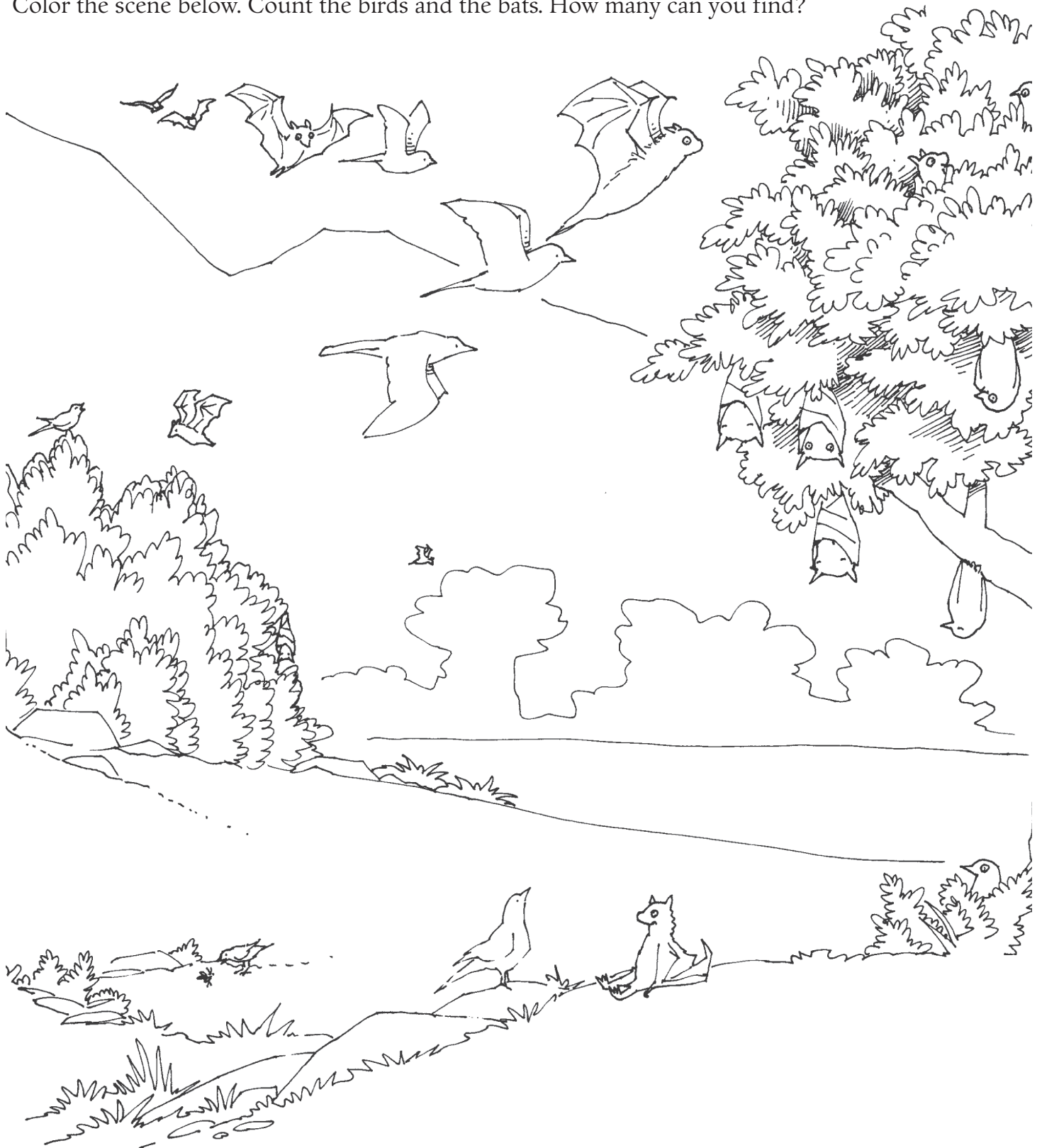
Connect the Dots

Connect the dots and color Stellaluna.



Color and Count

Color the scene below. Count the birds and the bats. How many can you find?

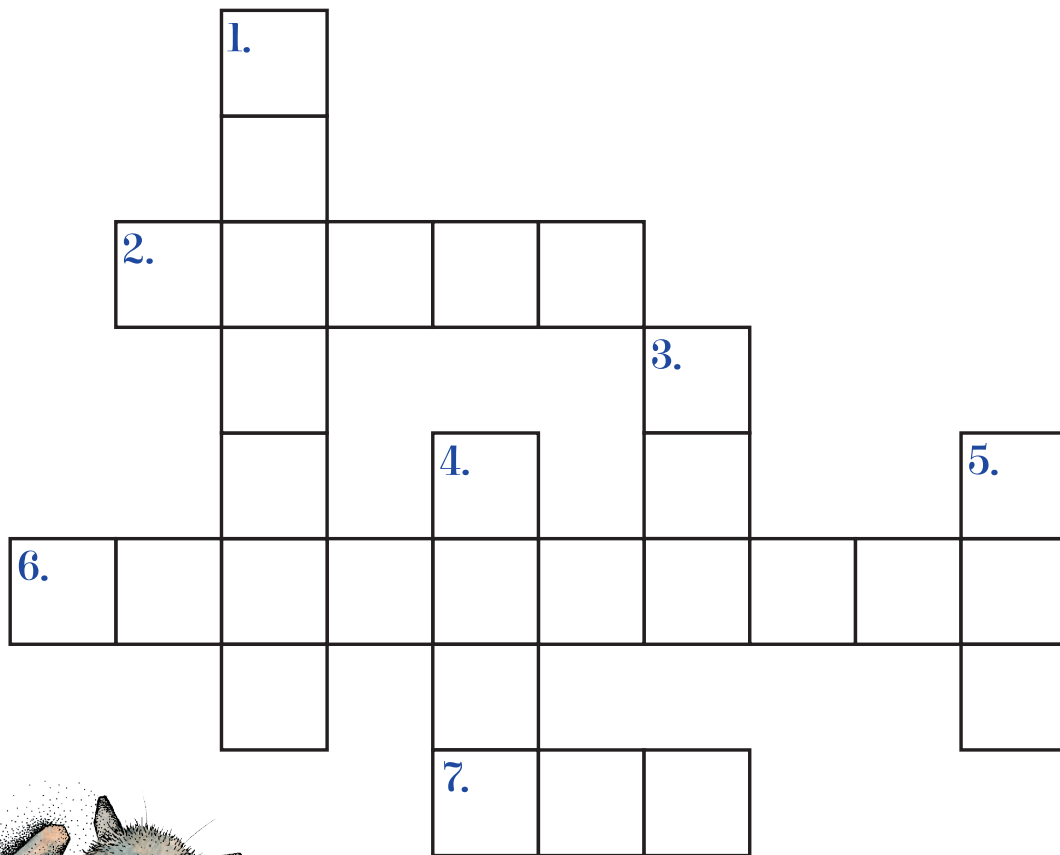
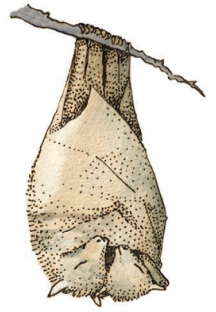


Birds _____

Bats _____

Crossword Puzzle

Solve the clues below to reveal character names and animal types from the story.



Across

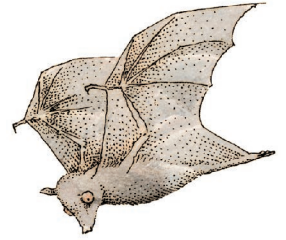
2. What type of animal are the feathered friends in the story?
6. The name of the hero of our story
7. The name of one of the three feathered friends

Down

1. The name of one of the three feathered friends
3. What type of animal attacked our hero at the beginning of the story?
4. The name of one of the three feathered friends
5. What type of animal is the hero of our story?

Bat Facts Quiz

How much do you know about bats? Test your knowledge by taking the quiz!



1. Bats are _____.
a. mammals **b.** birds **c.** amphibians

2. Bats can be found in every climate around the world except _____.
a. tropic zones **b.** polar zones **c.** arid desert zones

3. Fruit bats generally have long muzzles, large eyes, pointy ears, and furry bodies, so they are often called _____.
a. dog bats **b.** flying foxes **c.** winged wolves

4. To navigate when they fly, fruit bats rely on _____.
a. echolocation **b.** sense of taste **c.** keen vision

5. In addition to fruit, fruit bats love to eat _____.
a. flower nectar **b.** spiders **c.** snails



Bonus Question!

Fill in the blank:

The scientific name for bats is _____.

Garland



I
L
O
V
E
S
T
E
L
L
A
L
U
N
A

Print this page
on card stock using a color printer.
Carefully cut out the triangles and tape them (point facing down)
along a ribbon or string to spell I LOVE STELLALUNA.
Hang your garland in your room or across a doorway or window.

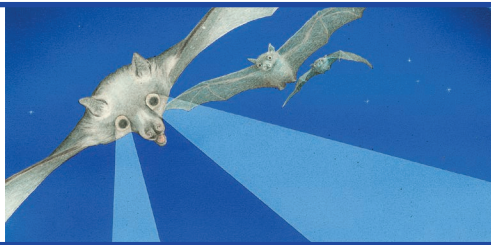
Friendship Bracelets

Cut out the bracelets below. Wrap around a wrist and tape to secure.



It's fun to hang out
with friends!

I go out on a limb
for my friends!



On the lookout
for new friends!

We're friends.
And that's a fact.





Start



Stellaluna Matching Game

Print these two pages on card stock using a color printer. Carefully cut the cards on the dotted lines.



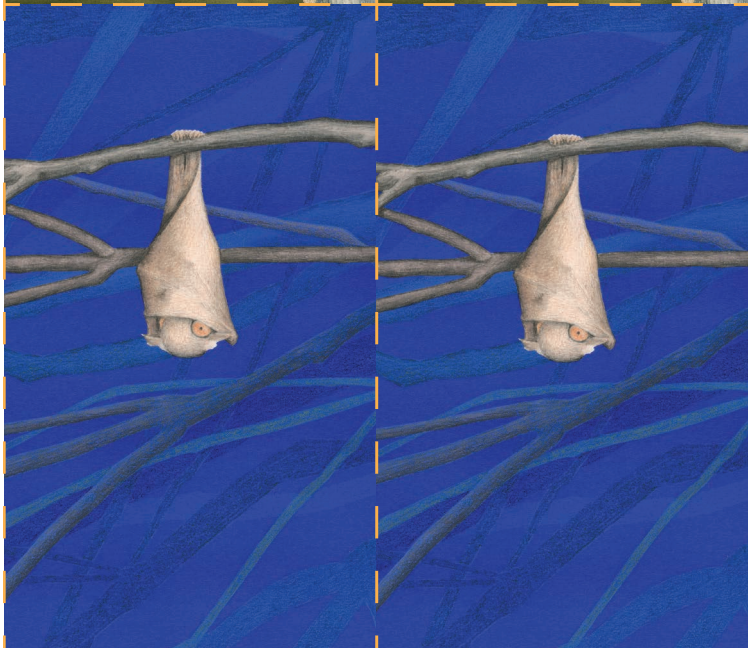
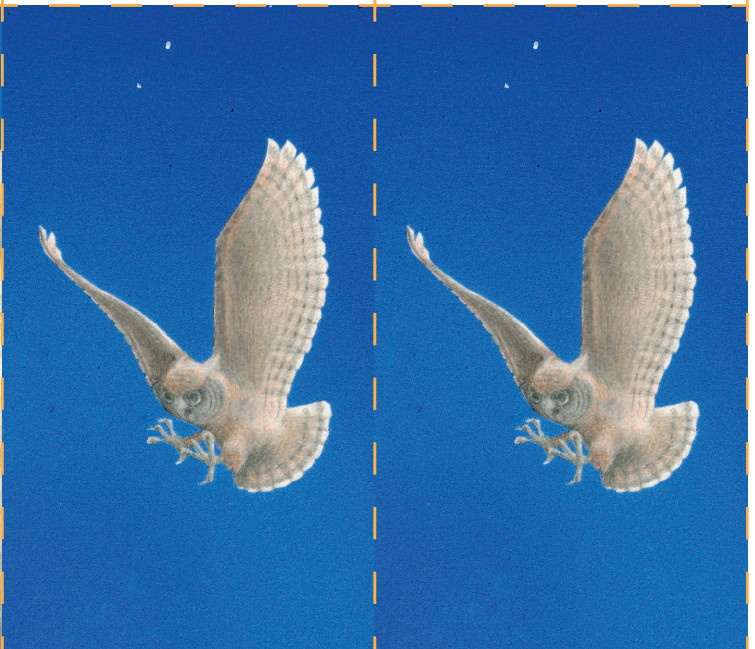
INSTRUCTIONS

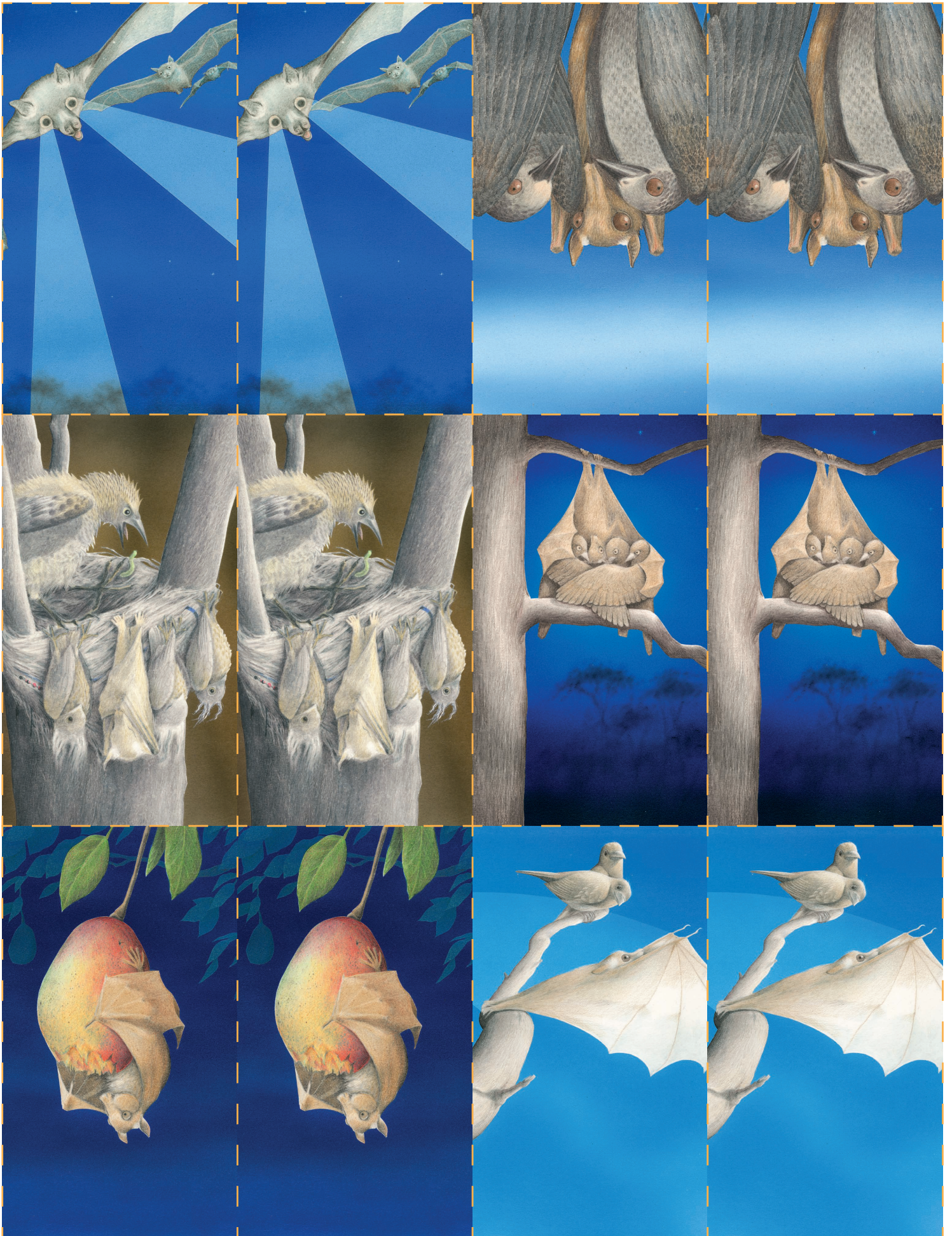
Shuffle the cards. Place the cards face-down on a table or the floor, arranging them in five rows, each with four cards. Players take turns turning over two cards. If the pictures on the cards don't match, the player replaces the cards, face-down. Then it's the next player's turn. If the pictures match, the player keeps the cards and selects two more cards. The player with the most pairs at the end of the game wins!



Stellaluna Matching Game

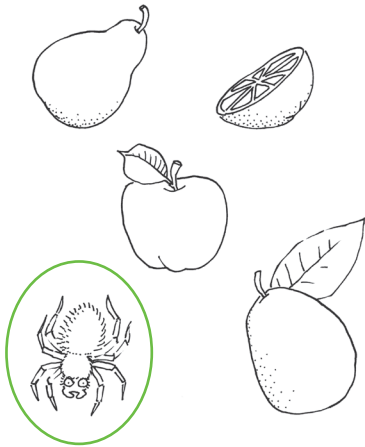
2-3 players



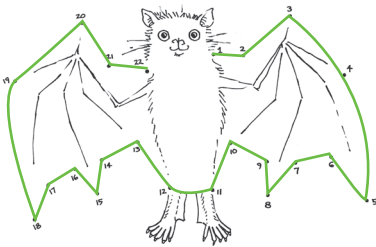


Answer Key

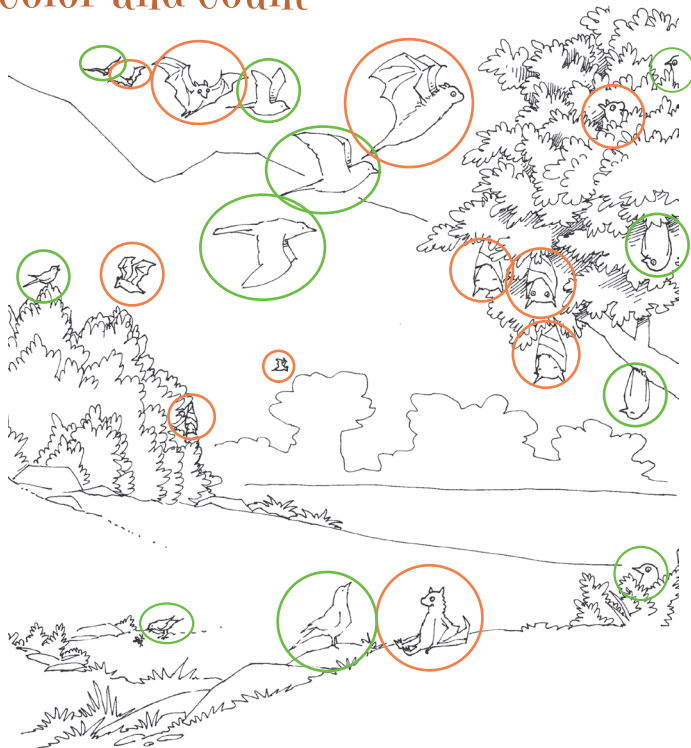
Favorite Foods



Connect the Dots



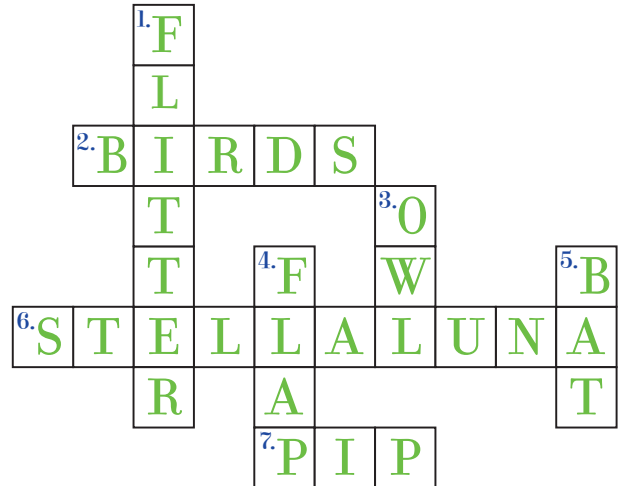
Color and Count



Birds 11 Bats 11



Crossword Puzzle



Bat Facts Quiz

1. a 2. b 3. b 4. c 5. a

Bonus: The scientific name for bats is *Chiroptera*.

Maze

